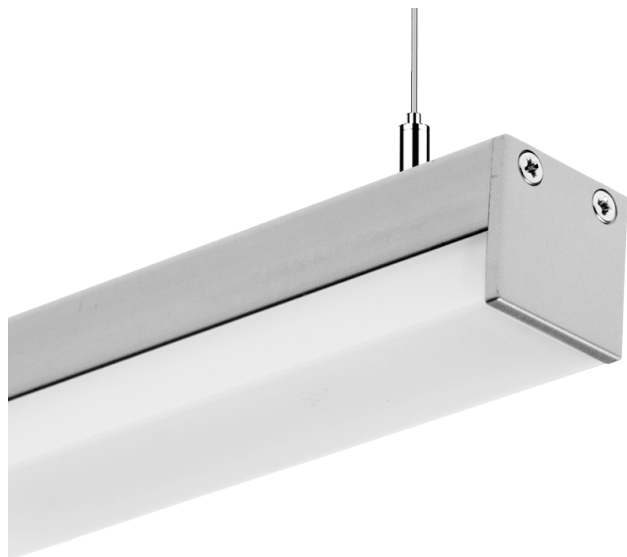


WARNING: RISK OF FIRE AND ELECTRICAL SHOCK. FIXTURE MUST BE INSTALLED BY A QUALIFIED ELECTRICIAN ONLY IN ACCORDANCE WITH NATIONAL, LOCAL BUILDING AND ELECTRICAL CODES. DISCONNECT POWER AT ELECTRICAL PANEL BEFORE SERVICING.

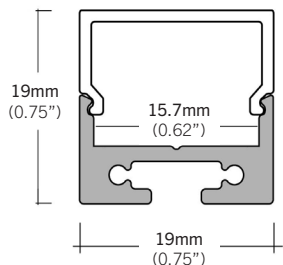
12100-10-P INSTALLATION INSTRUCTIONS FOR: 1-Inch Slim LED Linear Pendant Light



Safety Precautions:

- 1. Read Carefully:** Prior to installation or servicing, thoroughly read and understand all safety precautions and instructions on the back side. Failure to follow these guidelines may result in serious injury, electric shock, or property damage.
- 2. Qualified Installation:** It is strongly recommended that all wiring be performed by a licensed electrician. This fixture must be installed in compliance with all national and local electrical codes.
- 3. Avoid Wet Conditions:** Do not handle or attempt to energize the fixture with wet hands, or while standing on wet surfaces or in water. Do not install within 10 ft or less from the nearest edge of a pool, spa, fountain, or similar location
- 4. Verify Power Source:** Ensure the power source meets the fixture's requirements.

DIMENSIONS



PRE-INSTALLATION

Disconnect power source prior to installation.

For profiles 6–8 Ft. in length, factory suggests placing the suspension mounting screws at least 1/3 from the outside of the profile to avoid sagging.

Example: 8 Ft. Profile — Screws should be mounted 32" from each side



INSTALLATION

STEP 1: Wire the wall switch to the driver and junction box. Route the main power wire through the ceiling. (Refer to Figure 1.)

STEP 2: Drill a hole in the channel for the main power wire and another hole in the ceiling for mounting. (Refer to Figure 2A.)

STEP 3: Attach the LED tape to the channel, feeding the wire through the previously drilled hole. (Refer to Figure 2B.) Connect the supply wire to the main power.

STEP 4: Snap the lens securely into place.

STEP 5: Slide the mounting screw along the channel to the desired position. Securely twist the cable attachment onto the mounting screw. (Refer to Figure 3.)

Note: If using a straight connector, slide it into the raceway on top of the channel to ensure proper alignment, then connect it to the next channel.

STEP 6: Secure the end caps to the channel with screws. (Refer to Figure 4.)

